

# West Area Planning Committee Presentation

**17/02778/FUL**

**Land to the rear of 16 Chester Street  
Oxford  
OX4 1SN**

17

[www.oxford.gov.uk](http://www.oxford.gov.uk)



**OXFORD  
CITY  
COUNCIL**



# Site location plan



Stratford Street

[www.oxford.gov.uk](http://www.oxford.gov.uk)





[www.oxford.gov.uk](http://www.oxford.gov.uk)



**Views from Chester Street towards the site**



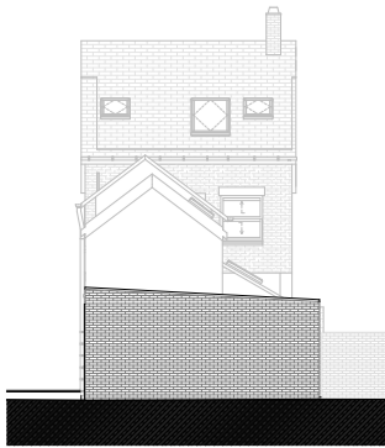
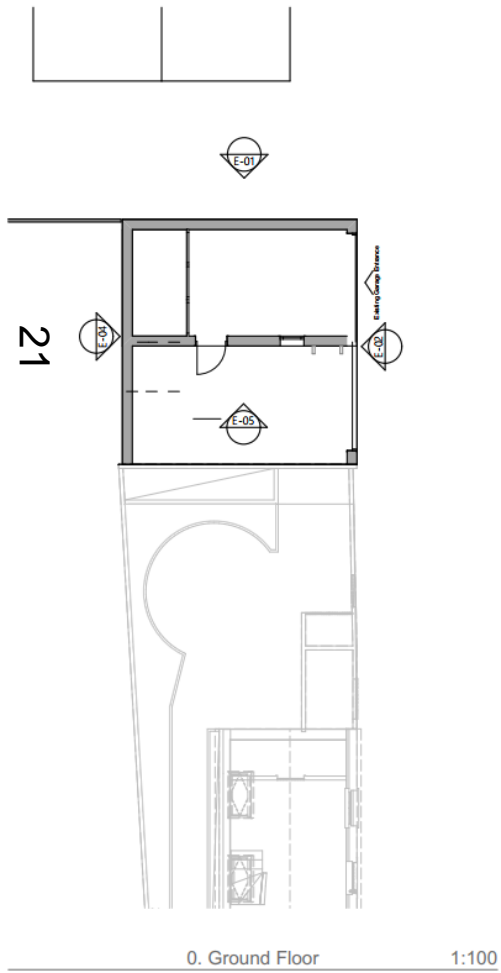
# Existing garages and passageway



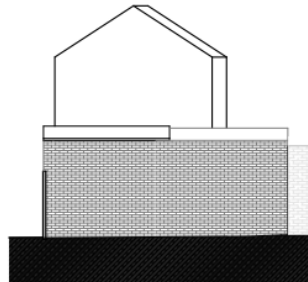
[www.oxford.gov.uk](http://www.oxford.gov.uk)



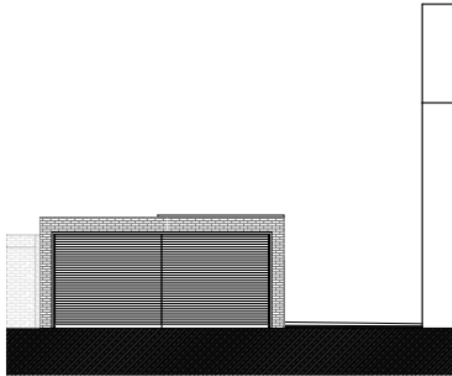
# Existing plans



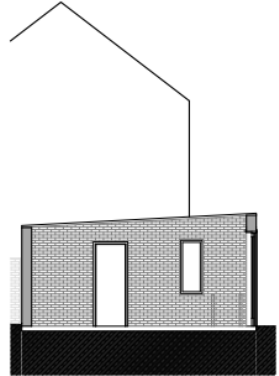
E-01 Elevation 1:100



E-04 Elevation 1:100



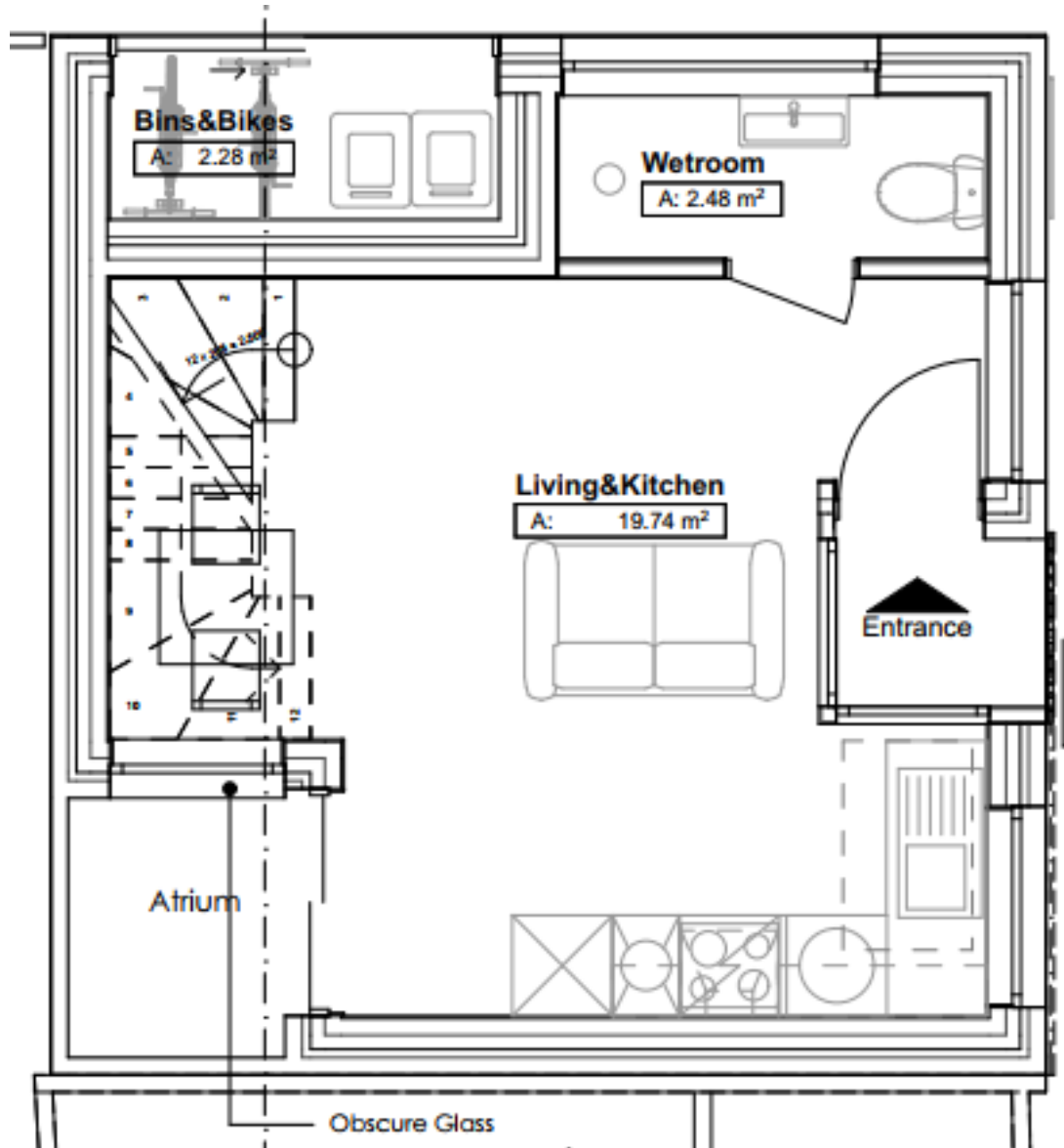
E-02 Elevation 1:100



E-05 Elevation 1:100



# Proposed ground floor plan

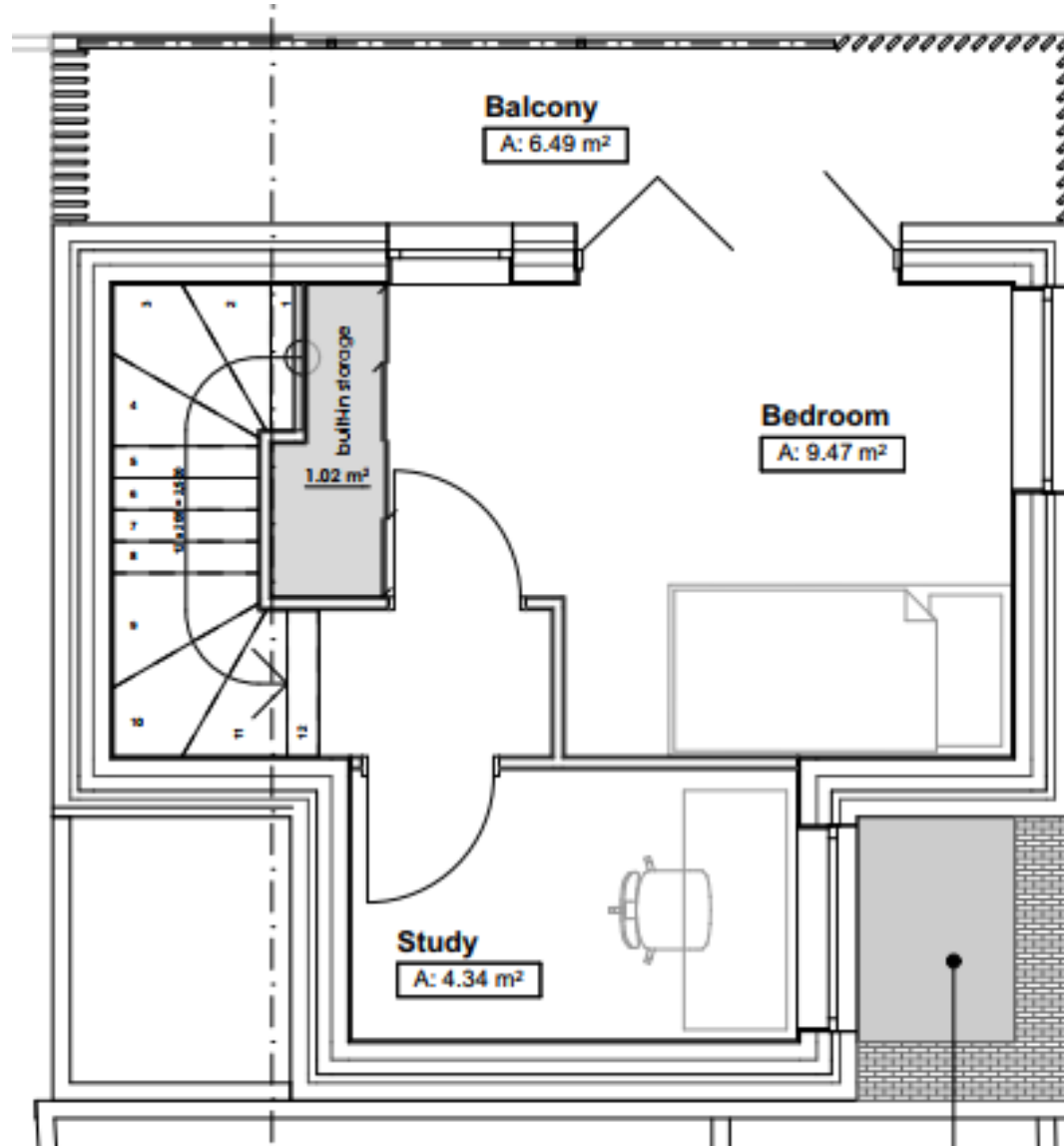


22



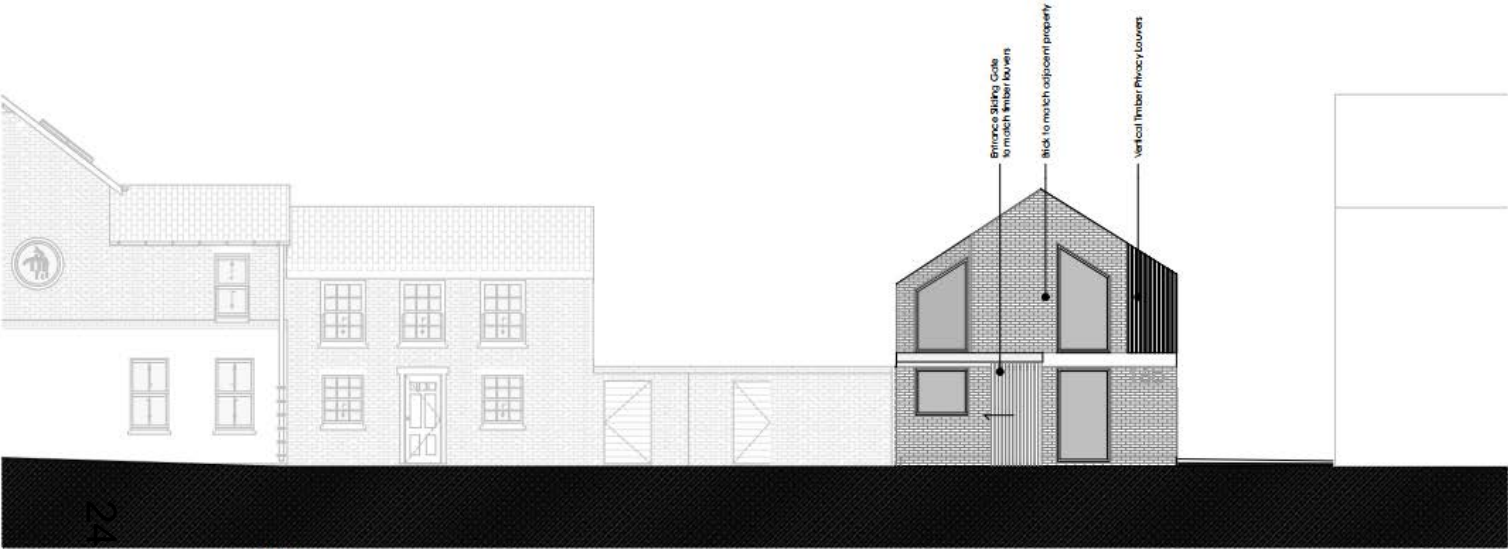
# Proposed first floor plan

23



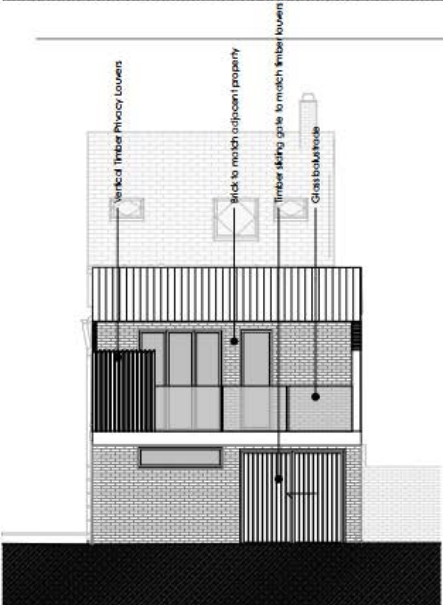
# Proposed elevations

[www.oxford.gov.uk](http://www.oxford.gov.uk)



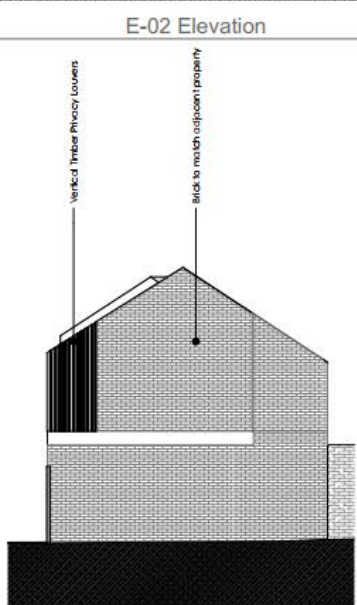
E-02 Elevation

1:100



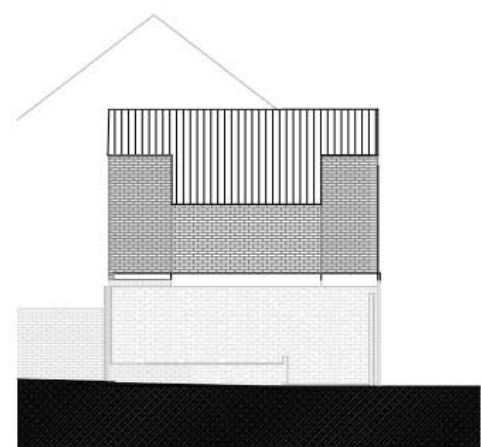
E-01 Elevation

1:100



E-04 Elevation

1:100



E-03 Elevation

1:100



# Proposed section

25



[www.oxford.gov.uk](http://www.oxford.gov.uk)



# Proposed timber louvers



OXFORD  
CITY  
COUNCIL

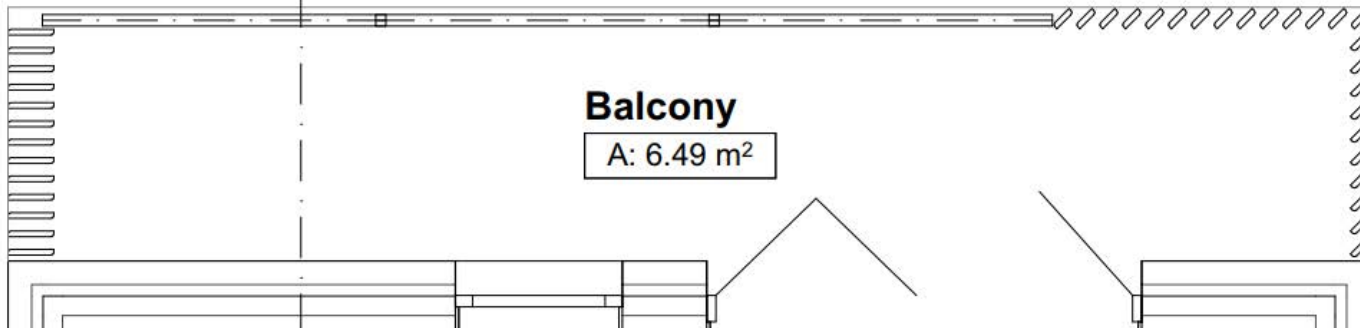


26



view through angled vertical timber louvers

preferred fixing method



# Visuals



[www.oxford.gov.uk](http://www.oxford.gov.uk)



**OXFORD  
CITY  
COUNCIL**





# Visuals



[www.oxford.gov.uk](http://www.oxford.gov.uk)

